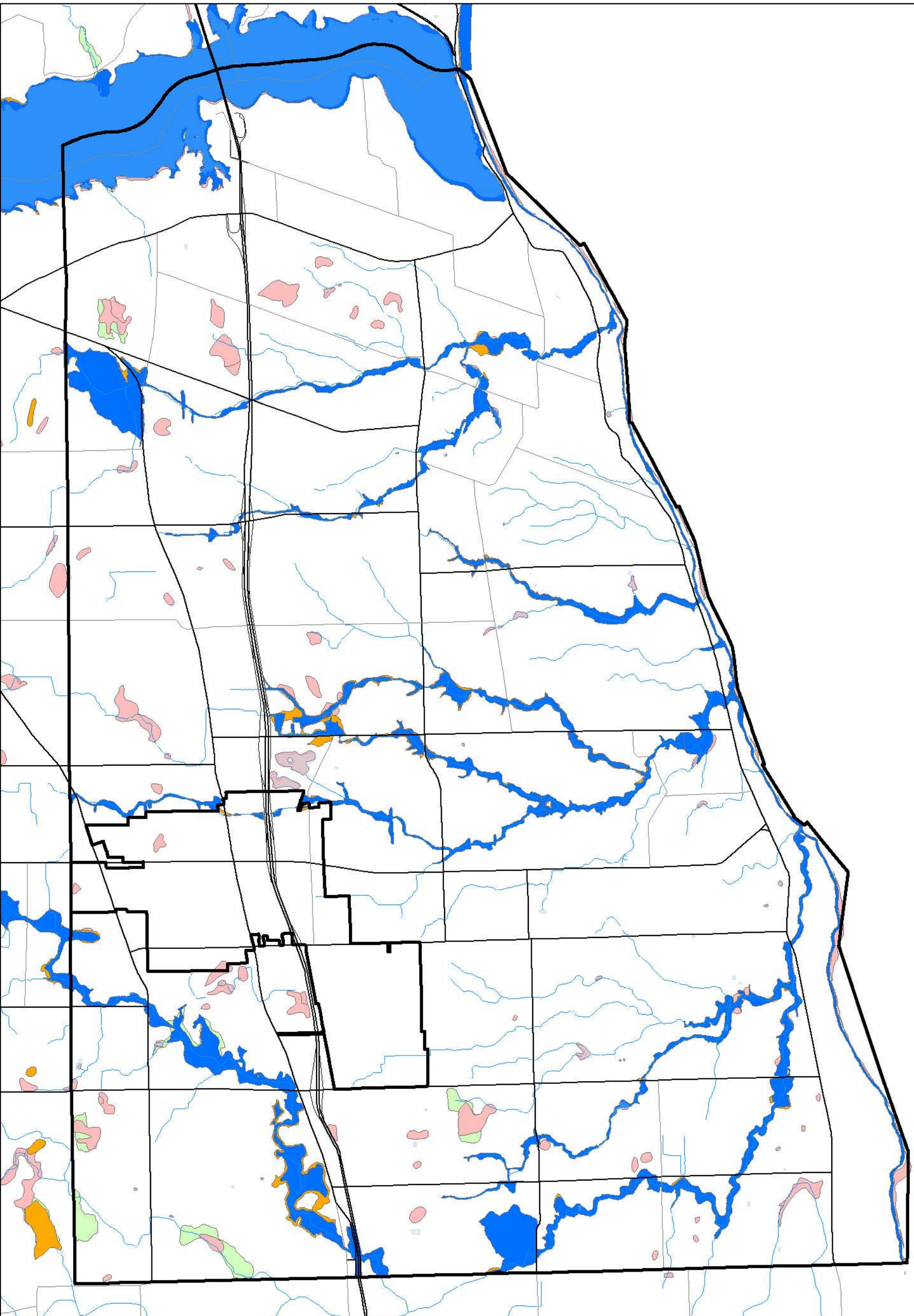


Floodplains & Wetlands

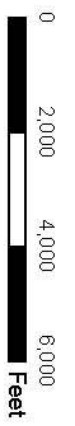
Figure 7



- Legend**
- Town and Village Boundary
  - State and County Roads
  - Local Roads
  - Streams
  - Flood\_Zones**
  - CLASS**
  - 100 year flood zone
  - 500 year flood zone
  - Federal\_Regulated\_Wetlands
  - New\_York\_State\_Regulated\_Wetlands



1:40,000



Source: All GIS files were obtained from the Monroe County Department of Environmental Services.